

Alibre Design V12.1

Release Notes

[New Features in V12.1 >](#)

[Upgrading to V12.1 >](#)

[System Requirements >](#)

[Known Issues and Fixes >](#)

[Appendix: Useful Information >](#)

[Bug Fixes in V12.1 >](#)



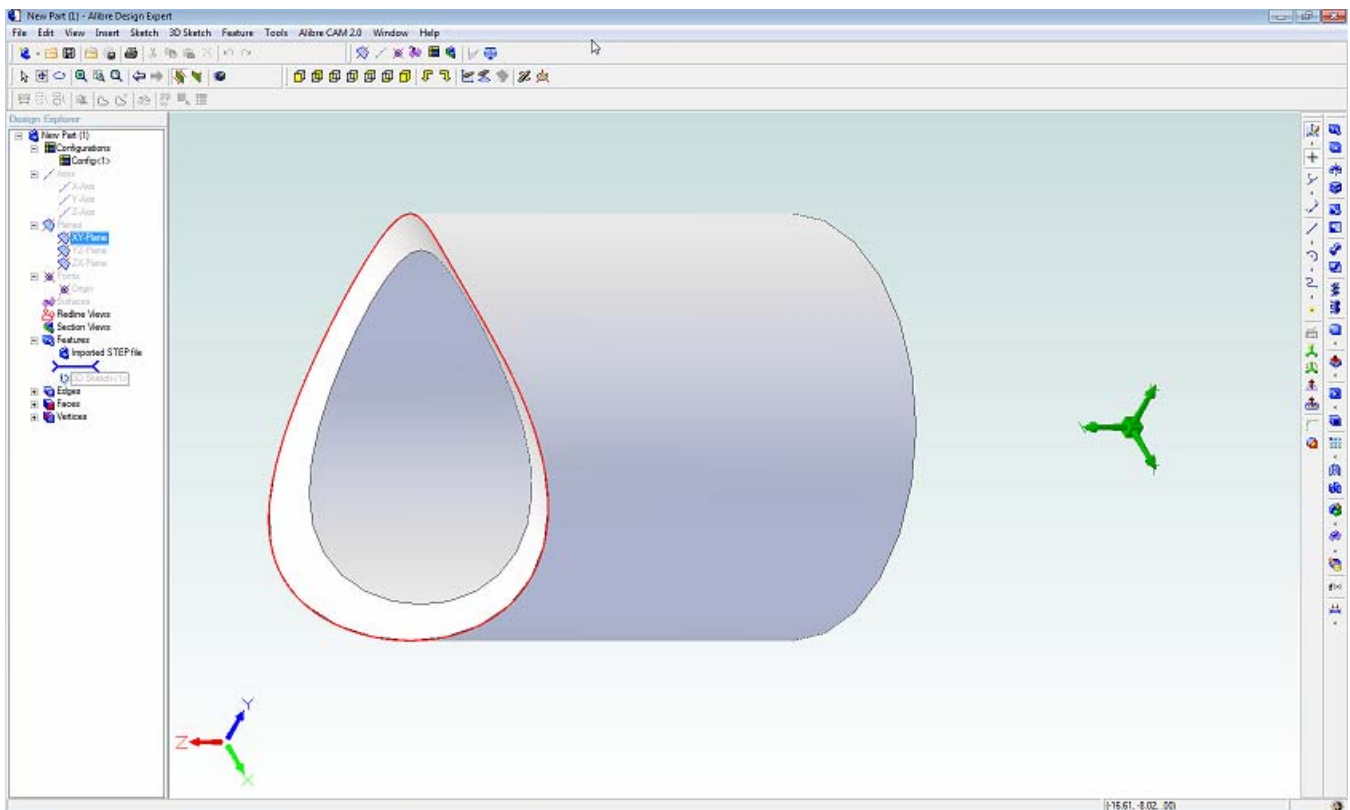
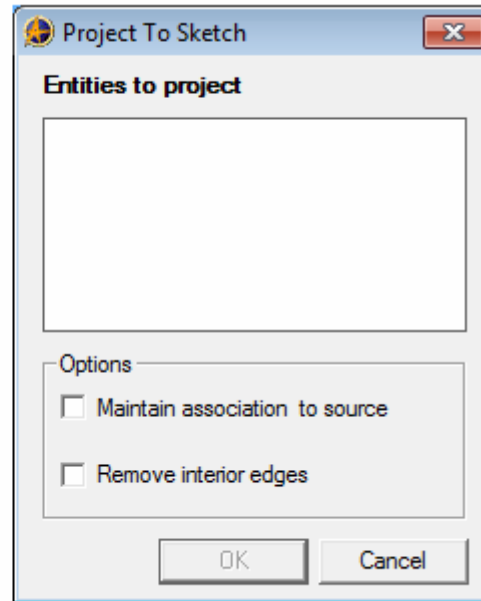
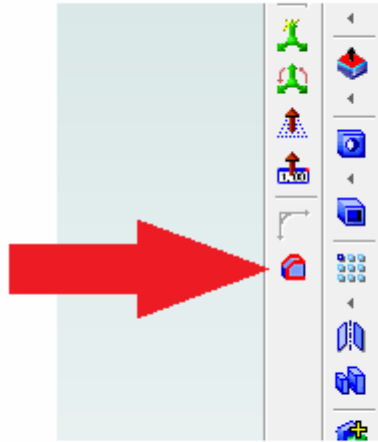
New Features in V12.1

Project to 3D Sketch

Description: Project edges of solid and surface geometry into 3D sketches.

Usage:

- Provides boundaries for 4th axis machining operations in Alibre CAM 2.0.
- Enables associative, 3D sketch paths for interdesign (top-down) applications, especially sweeps.

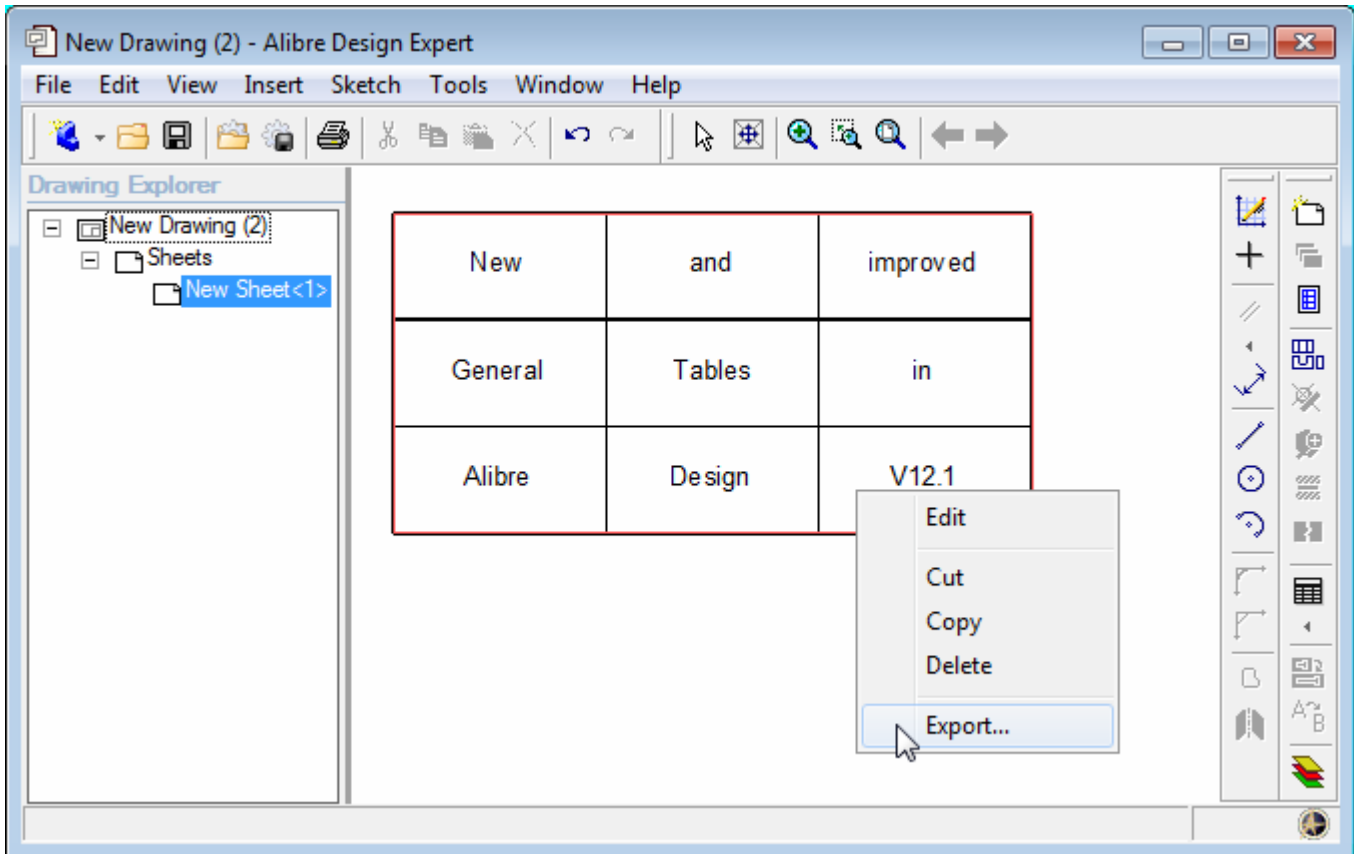
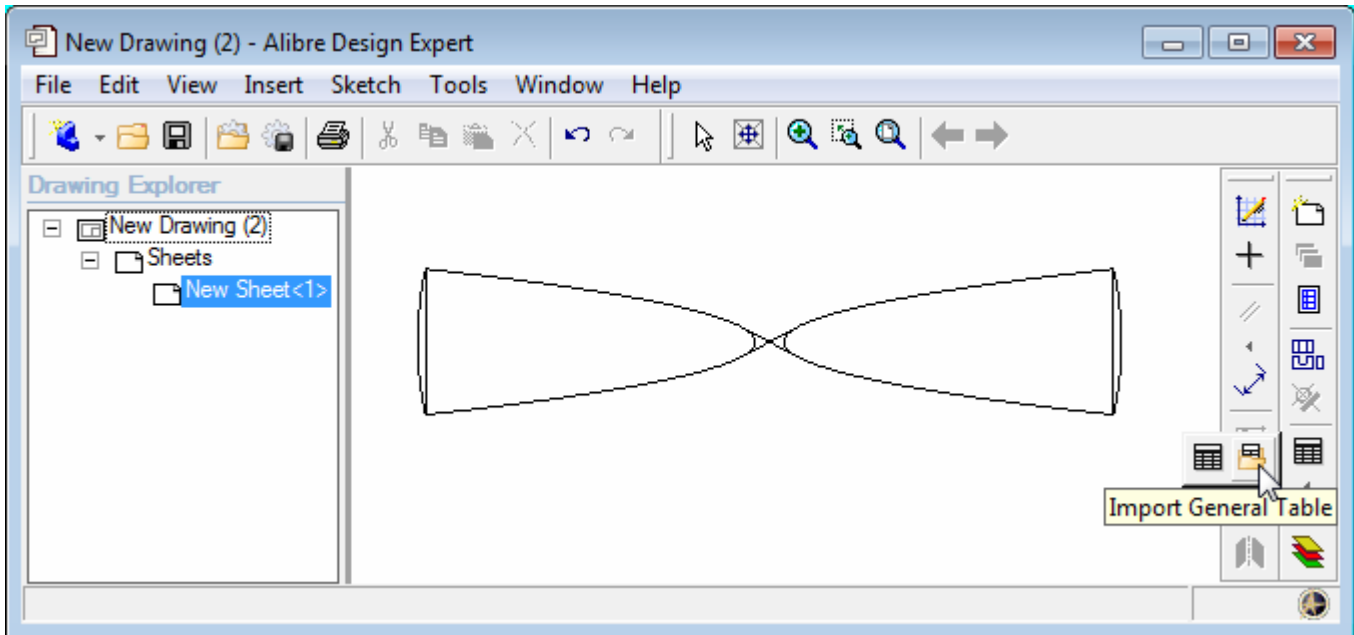


New Features in V12.1, continued...

General Table import/export via .CSV files

Description: General Tables in 2D drawings (new to v12.0) can now be imported and exported by utilizing .CSV files (comma separated value files).

Usage: CSV files can be easily created with Notepad, Microsoft Excel, and many other spreadsheet and word processor applications.



New Features in V12.1, continued...

Modified default toolbar settings

Description: Redline and PDF publishing toolbars do not appear by default. Orient View toolbar appears by default.

High contrast mouse cursors

Description: All-black mouse cursors replace two-color cursors that were difficult to see with the default color scheme.

Upgrading to V12.1

Alibre Design Expert and Alibre Design Professional customers will need to update add-on applications according to the following guidelines.

Add-on Application	Update available for V12.1?	Update Instructions
Alibre Vault	Yes	<p>Click here to view installation guidelines when installing for the first time.</p> <p>Note: The migration tool and instructions are located in the Program folder of your Alibre Design installation directory.</p> <p>Note: <u>Do not uninstall the Alibre Vault</u> when upgrading it. Choose the Simple Upgrade option from the installer.</p>
Alibre CAM	Yes	<p>When upgrading to Alibre CAM 2.0, you are NOT required to uninstall previous versions.</p>

Note: During install of any add-on, if presented the choice to Modify, Repair, or Remove the current installation, always select Remove.

Minimum System Requirements

Supported Operating System

Windows XP Professional Edition or Home Edition
Windows Vista Basic, Business, Home, or Ultimate
Windows 7 Basic, Business, Home, or Ultimate
(32-bit and 64-bit systems supported)

Hardware Requirements

Intel Pentium or equivalent processor: 2 GHz or faster
RAM: 2 GB minimum
Screen Resolution: 1024 x 768 minimum, 1280x1024 or greater recommended
Video Card: 64 MB or higher, 128 MB minimum for Vista
- Card must support DirectX 9.0c
Hard Disk Space: 500 MB
DVD-ROM Drive (If installing from DVD)
Mouse or pointing device

Software Requirements

Internet Explorer 6.0 or later
.NET 2.0 Framework
J# Redistributable
DirectX 9.0c or later

Note: If you do not have these, they will be installed automatically.

Known Issues and Fixes

This section lists known issues. Workarounds are provided when available.

Reinstallation of Alibre Design may be required after upgrading operating system

When upgrading from Windows NT or Windows 98/ME to Windows XP, an un-installation and re-installation of Alibre Design may be required. No data will be lost in the process. This also applies to some of the add-ons, like Algor DesignCheck and VisualMill.

To ensure Alibre Design is installed correctly after upgrading from Windows Vista to Windows 7, uninstalling Alibre Design and reinstalling is recommended. No data will be lost in this process. This also applies to some of the Add-ons, like Algor DesignCheck and VisualMill.

My screen is mostly just gray, and I can't see any planes or model geometry

If your workspaces are gray, ensure you have DirectX 9.0xc or greater. This will solve the problem the vast majority of the time.

If you have DirectX 9.0c or greater and the problem persists, it is because your video card does not support a particular feature called Stencil Buffering. Nearly all video cards made in the last several years support this feature, but if yours does not there is a way to disable Alibre Design's reliance on it. This disabling process will mean that you cannot use the new 2D Fast View mode when making a 2D drawing.

To continue to use Alibre Design without this feature, in the Alibre Home Window go to Tools > Options > Display tab and select "Disabled" for the Advanced 2D Rendering combo box. After changing this setting Alibre Design will need to be restarted for the changes to take effect.

Mouse-wheel zoom seems broken

The Alibre Design graphics work area may not respond to mouse wheel input while other areas of Alibre Design will respond to mouse wheel input. This occurs frequently when a PS2 mouse is plugged in after the operating system has booted or the mouse driver is outdated. If using a Logitech mouse and the Logitech SetPoint software you will need to remap the mouse wheel in the software.

Menus have graphical anomalies, disappear, or lag

If experiencing issues with menu dropdowns such as the menu disappearing, or not refreshing correctly, this is most likely occurring because of the Microsoft Intellipoint mouse control software. Check your task manager for imouse.exe. If this is running you will need to uninstall this software or remove the startup process.

Alibre Part Library is inaccessible

The Alibre Part Library is a catalog of standard parts available to all Alibre Design Professional and Alibre Design Expert users. The Alibre Part Library requires an Internet connection to download requested parts.

If you are experiencing intermittent problems accessing parts, please verify that you have an active and working Internet connection.

If you do have a good Internet connection and still are unable to download parts, please check to see if you are connecting through a proxy-server. The Alibre Part Library will not download parts if your system is configured to use a proxy-server. To test, run the program *ProxyServerTest.exe* located on the Alibre Design product CD.

If you are running through a proxy-server, please contact Technical Support for assistance.

If you are unaware of what a proxy server is, then chances are this is not the case and you should call Alibre Support.

PhotoRender crashes when I close it

Note: PhotoRender does not apply to you if you purchased Alibre Design v12 or later

PhotoRender may crash when closing it if you are using an ATI graphics card and your graphics card driver is not up to date. Download and install the latest graphics card driver for your card.

Known Issues and Fixes, continued...

Overlapping sheet metal tab features change thickness

All sheet metal algorithms assume the sheet metal stock has constant thickness throughout. The software uses this thickness value for a variety of purposes including offsetting dimple sketches, creating chopping blades in unbend/rebends, calculating several flange parameters, etc. Creating two or more flanges that overlap in space results in a non-uniform sheet thickness. Once this happens, several formulae and assumptions made in sheet metal algorithms become invalid. This is a limitation in the current software. Still, multiple tab features are valid as long as the uniform thickness is maintained.

This is typically not an issue because sheet metal parts with overlapping tabs cannot be manufactured out of normal sheet stock to begin with and are rarely designed intentionally.

Unable to create section view of broken view

Creating a section view of a broken view results in a section view of the unbroken view to the extents of the defining section line. This is a limitation of the current software.

My startup screen goes blank during a license update or update check

Alibre Design can check for license updates automatically when you start the program. This is useful for example if you buy an upgrade and want the new functionality to reflect in your currently installed version of Alibre Design immediately. Occasionally, there may be a blank or non-responsive screen for a few seconds.

This is simply a failure to update the visual progress; however the license update process is continuing in the background. Please allow the update to continue without interruption. If you do not want to perform license checks upon starting Alibre Design, please turn this option off in Home Window > Tools > Options.

A sheet metal dimple is failing when my profile has B-Splines

Alibre Design can create sheet metal dimples with closed B-spline profiles provided the sketches are tangent continuous at the start-end location. 'B-spline by Interpolation Points' does this automatically when you make the start and end locations coincident. You must ensure this manually if you are using B-spline by Control Points by defining the 2nd last control point to lie on the start location tangent line at the provided location hint. You do this while sketching the spline's last two control points; it cannot be done after finishing the spline.

Limitations mirror and pattern features in part workspaces

- Shelled features cannot be mirrored or patterned.
- Local operations such as remove, move, or offset face cannot be mirrored or patterned.
- Sheet metal flange features cannot be mirrored or patterned.
- Imported geometry such as IGES and SAT bodies cannot be mirrored or patterned.
- Mirrored or patterned features of parts that have been scaled will be created to the original scale.
- Topology Pattern features cannot be patterned or mirrored.

How do I get back an instance of an assembly pattern I deleted

When an instance of an assembly pattern is deleted, and needs to be restored, the pattern will have to be recreated.

I changed some appearance options for sketching and they aren't reflected

Some visual options such as constraint icon size, sketch color, or node size will not be reflected immediately if you are active in a sketch when you make the change. Simply exit your sketch and re-enter it and the changes are reflected from that point onwards.

I get section view hatching problems when using Fast Views and un-sectioned parts

If you are using Fast Views there may be some issues when creating section views that contain specifically un-sectioned parts. If you have overridden a part's section status so it does not appear as sectioned within the view, anything that is sectioned begin in the view will show through.

This is a limitation of Fast View mode, and converting the view to a Precise View mode will solve the problem.

Known Issues and Fixes, continued...

Alibre CAM won't generate proper toolpaths for sketches made by the text tool

Alibre CAM 1.x cannot interpret a text symbol, which is created by default when using the text tool in 3D modeling. To create toolpaths based on sketches that contain text, you must explode the text symbol. To do this:

- Edit the sketch that contains the text
- Double click the text
- The Text dialog pops up
- Select the Explode button

Alibre crashes when exporting SolidWorks files

Your user profile in Microsoft Windows must include administrator privileges in order to avoid this problem.

Known Issues in Windows Vista

I get some graphical anomalies occasionally, such as a temporary gray screen

This can occasionally be an issue when you are using the Windows Aero Theme in Vista and do not have a sufficient computer to run Windows Vista with the Aero Theme and Alibre Design simultaneously.

The first thing to check is that you have the most current graphics driver for your video card. If that does not fix the issue, you should consider upgrading your hardware (RAM, Video Card). If you need help determining what area of your system is likely causing the problem, you can contact Customer Support.

Note that this problem can be eliminated by turning off the Windows Aero Theme in Windows Vista, though you may prefer to upgrade your system so you can keep the slick visuals it brings.

The Excel add-in isn't working properly

Microsoft Excel has to be run "As Administrator" in order for the Excel add-in (Spreadsheet driven design) to work correctly. Before working on Spreadsheet driven design, right click on the Excel icon and choose to "run as Administrator" and then open a file manually.

I can't run the MSI file to install Alibre Design

When installing from the DVD, you will not be able to run MSI file for installing the product on Vista. Always use Setup.exe to install the product. This will always work and is the normal recommended way in general to install Alibre Design.

ETBX is not able to use Vista Aero visual theme

Sprutcam 4.0 (legacy) does not work in Vista

SprutCAM 4.0 will have to be explicitly run as Administrator when running it from outside of Alibre Design.

Algor Designcheck or VisualMill doesn't work after upgrading from XP to Vista

After upgrading from XP to Vista, if you had already installed Algor DesignCheck or VisualMill on XP you will have to uninstall and re-install these add-ons on Vista.

My 3D Connexion device isn't working on Vista

In order to run the 3D Connexion driver, you may have to explicitly run the driver as an Administrator by right clicking on it and choosing to run as Administrator.

VisualMill will not install on Vista 64

VisualMill will not install on 64 bit Windows Vista. Please contact Customer Support for updates. Alibre CAM does install on 64 bit machines.

Known Issues and Fixes, continued...

Machinist Toolbox Help doesn't work on Vista 64

Help may not work in Machinist Toolbox with 64-bit Vista. This is a limitation of Machinist Toolbox.

APPENDIX: Useful Information

Tips for Dimensioning to Holes with Cosmetic Threads

When dimensioning to holes with cosmetic threads displayed, be sure to select the hole geometry instead of the cosmetic threads.

Alibre Design and Windows XP Remote Desktop

Standard Microsoft Windows XP Remote Desktop configurations do not support DirectX accelerated displays and Alibre Design will not display correctly in a Windows XP remote desktop window. Consider switching to a different remote access application such as VNC or GoToMeeting or installing Alibre Design locally.

Versioning is not available when using the Windows File System

The Alibre Vault provides file management capabilities not available in the Windows file system, such as versioning, sharing and security, and caching. If you do not have a version of Alibre Design that supports the Alibre Vault and you need file management capabilities, please contact your sales representative.

How to Contact Alibre Customer Support

Alibre is committed to ensuring that customer support issues and technical questions are handled as efficiently and promptly as possible. For all issues related to sign-in, launch and general technical problems, contact Alibre Customer Support:

Phone 972-671-8492, press 4 for Support or ext. 300

Email support@alibre.com

Online Incident Entry

The Alibre web site - <http://www.alibre.com/> - offers additional support options. After you sign in at the web site, click the Support & Training link at the top.

Now, expand the Support link on the left side to reveal options to enter a new Support Incident online or to check the status of existing incidents.

Bug Fixes in V12.1

Import/Export & Alibre Translate

Clarified error message in Alibre Translate

Body does not show if imported part contains a 3D sketch for STEP file import/export

API

New API to query if a sketch or feature is "active"

APIs to 1)query unique ID for a sketch figure and 2)bind to figure given its unique ID

Access to tool to create 3D sketch from edges and face boundaries

API method to add a 3D Polyline

Call `api_get_entity_box()` when calculating facetting parameters for a helical face

Assembly

Parts are not cut properly in section view after being rotated

Animated view and part transforms not applying to assembly constraints

2D Drawing

Ctrl+C with Alibre Design symbols

Cannot pick the circle (for detail view) or line (for section view) in this case

Internal/External threads get removed from the section view on reprojection & several other issues

Cannot create a drawing template with a table

PHL - bounding box for broken view is incorrect

Cannot change font properties for BOM callouts

Sketch-labels & sketch fields not accounted for when zoom to fit

Center line inserted for the hole instead of a center mark

Dragging section view lines of an assembly will make cosmetic threads and centers disappear

Text shifts in printed drawing when using certain 2D drawing templates

Localization

Problems opening saved files in some localized versions of Alibre Design

Broken dialogues In Italian V12

Hungarian is not the default language when installed

Alibre Vault / M-files

Cannot edit design properties for part that is not opened from the 'active' vault

Constituent files are not updated in M-Files

Unable to save assemblies to M-Files 6

Default vault is sometimes blank in M-Files/Alibre Vault version 6.0

Part

Nodes do not highlight with select all

Flat shading is not maintained when part is closed/re-opened

Some 11.2 fillets lose reference to their targets

Counter sink angle from previous hole becomes drill angle when creating new counter sunk drilled hole

When changing hole type in the hole creation dialog, creation properties do transfer to the new type

Bug Fixes in V12.1, continued...

Sheet Metal

Changing stock thickness of sheet metal will cause crashes
Sheet metal lofted flange unable to flatten

Sketch Constraints

Pre-selection is lost when using a 2D fillet & chamfer
Ability to use shift button with lasso selection
Cannot lasso and select reference figures
Midpoint node does not correctly show the size/color
Intersection constraint not created even if the mouse cursor indicates so when sketching figures
Toggling DOF colors/callouts on takes a long time in certain cases
Real-time dimensioning boxes show up on the canvas as ghost images
Rollover cursor is missing when constraining to ellipse, elliptical arc, and circle

Other

Rollover on mouse pause doesn't work
Site Key Generator doesn't work on Windows 7

Lista Studio srl

Borgo Belvigo 33
36016 Thiene Vi
tel. 0445,382056
www.lista.it
info@lista.it